



Enterprise Reporting Solution

Argos 6.1 Release Guide

Product version 6.1

Last updated 9/27/2018

Trademark, Publishing Statement, and Copyright Notice

© 1998-2018 Evisions, Inc. All rights reserved.

This software and related documentation are provided under a license agreement containing restrictions on use and disclosure and are protected by intellectual property laws. No part of this document may be reproduced, stored in or introduced into a retrieval system, or transmitted in any form or by any means (electronic, mechanical, photocopying, recording, or otherwise), or for any purpose, without the express written permission of Evisions, Inc.

The information contained herein is subject to change without notice and is not warranted to be error-free. Product features referenced herein for a period of time may not match product contents. Evisions, Inc. does not warrant that the functions contained in the software will meet your requirements or that the operation of the software will be uninterrupted or error free. Evisions, Inc. reserves the right to make changes and/or improvements in the software without notice at any time.

This software and documentation may provide access to or information on content, products, and services from third parties. Evisions, Inc. and its affiliates are not responsible for and expressly disclaim all warranties of any kind with respect to third-party content, products, and services. Evisions, Inc. and its affiliates will not be responsible for any loss, costs, or damages incurred due to your access to or use of third-party content, products, or services. Evisions, Inc. does not endorse the content or developer of any products or web sites mentioned.

All information in this guide is designed for instructional purposes only. Evisions, Inc. makes no guarantees regarding the accuracy or performance of any techniques used in this guide. Software configurations and environments may vary, and some techniques used in this guide may not operate efficiently under all configurations. This guide may contain examples of various technologies or products, which are the sole property and responsibility of their creators.

Trademarks are the property of the respective owners for any products mentioned herein.

Table of Contents

What's New in Argos 6.1? **4**

 MAPS and Argos Updates 4

 Product versions 4

 Installation 4

 1. Prepare test environment and ensure current backup 4

 2. Check for updates 4

 3. Allow update process to complete 5

 4. Verify the latest version is installed 5

Argos 6.1 Release Notes **6**

Getting Help **9**

What's New in Argos 6.1?

Evisions is pleased to announce the release of Argos version 6.1, which includes the following changes:

Enhancements:

- Browser cookies set by MAPS now use the HTTPOnly and Secure attributes, which may help prevent some types of cross-site scripting and packet sniffing attacks.
- In the Web Viewer, when focus is inside a list box you can now type successive characters to perform an incremental search for values within the list.
- In the Web Viewer, dates in multi-column list boxes now default to the user's local date format (as configured in the browser) if no format was specified by the DataBlock Designer.
- In the Web Viewer, the Shared Shortcut button is now grayed out if the user does not have permission to create shared shortcuts.
- The Escape key can now be used to close a dashboard in the Web Viewer.
- The E,S,R, and number keyboard shortcuts that went to the Explorer, Shortcuts, and Recent tabs and to the folder paths in the breadcrumb trail have been updated to use AccessKeys instead. This resolves an issue where the shortcuts could be unintentionally activated when attempting to search within a listbox.

Resolved Issues:

- Attempting to run a DataBlock after selecting its Share via Email button was resulting in the error 'DataBlock "" does not exist'.
- In version 6.0, clicking into a form field and then pressing Tab resulted in focus jumping to the top of the Web Viewer instead of going to the next form field.
- Additional enhancements and resolved issues.

We appreciate the feedback received from all of our users. Our products would not be what they are today without your continued support. If you have any comments or suggestions, please do not hesitate to [open a HelpDesk ticket](#) and let us know.

MAPS and Argos Updates

Some of the changes in this release require an update to MAPS as well as to Argos. We recommend upgrading both products to the latest versions concurrently.

[Product versions](#)

The latest versions of MAPS and Argos included in this release are:

- Argos mapplet 6.1.0.1790 / Argos client 6.1.0.2174 / Web Viewer 6.1.0.69
- MAPS service 6.1.0.1940 / MAPS Config 6.1.0.1049 / eLauncher 6.1.0.19

Installation

[1. Prepare test environment and ensure current backup](#)

We highly recommend installing updates in a test environment before applying them to your production environment. You should make sure that a current backup is available in case of any unforeseen issues. To create a full backup of your MAPS environment, go to the **Server** -> **Backups** screen in MAPS and click **Backup Now**.

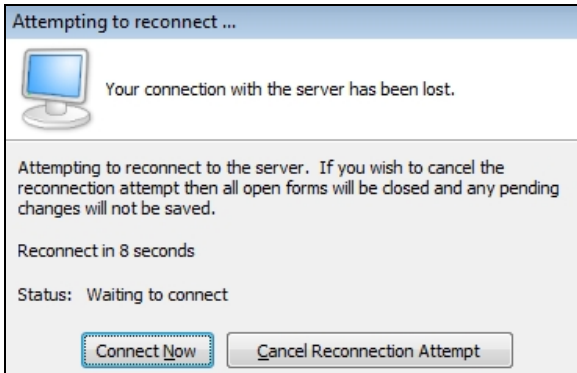
[2. Check for updates](#)

Click the **Check for Updates** button in the MAPS Configuration tool to view available updates.

It is possible to apply updates when users are on the system; however, to avoid the possibility of losing unsaved work we recommend applying updates during off hours.

3. Allow update process to complete

When applying updates to the MAPS service you will be temporarily disconnected from the server:



The update process may take a few minutes to complete. **Do NOT cancel the reconnection attempt or manually restart the server.** You will automatically be reconnected to the server once the update has been applied.

4. Verify the latest version is installed

To ensure that you are on the most current version, continue clicking the **Check for Updates** button and applying the updates until no new updates are available.

Please Provide Us with Your Feedback!

As always, we welcome any [feedback or suggestions](#) you may have. We very much appreciate your thoughts and suggestions, so please keep the great ideas coming!

Argos 6.1 Release Notes

Argos Mapplet 6.1.0.1790 / Argos Client 6.1.0.2174 / Web Viewer 6.1.0.69
MAPS Service 6.1.0.1940 / MAPS Config 6.1.0.1049 / eLauncher 6.1.0.19

Argos

Enhancements

Area	Description	Issue number
Accessibility	The Escape key can now be used to close a dashboard in the Web Viewer.	AR-5053
Dashboards	In the Web Viewer, when focus is in a list box you can now type successive characters to perform an incremental search for values within the list.	AR-4900
Security	Browser cookies set by MAPS now use the HTTPOnly and Secure attributes, which may help prevent some types of cross-site scripting and packet sniffing attacks.	AR-5440
Web Viewer	Mac users can now use the Command key (Cmd+click) to select multiple values in list boxes and multi-column list boxes in the Web Viewer.	AR-5000
Web Viewer	In the Web Viewer, dates in multi-column list boxes now default to the user's local date format (as configured in the browser) if no format was specified by the DataBlock Designer.	AR-4511
Web Viewer	When creating a shortcut in the Web Viewer, the Shared Shortcut button is now grayed out if the user does not have the ability to create shared shortcuts.	AR-5101
Web Viewer	Improved the way DataBlocks with special characters in their names were sorted to more closely match the sort order in the Argos client.	AR-4822

Resolved Issues

Area	Description	Issue number
AWV	The E,S,R, and number keyboard shortcuts that went to the Explorer, Shortcuts, and Recent tabs and to the folder paths in the breadcrumb trail have been updated to use AccessKeys instead. This resolves an issue where the shortcuts could be unintentionally activated when attempting to search within a listbox. The new shortcuts are Alt+X, Alt+S, Alt+R, and Alt+[#] (Chrome, IE), or Alt+Shift+[key] in Firefox. Mac users can access the shortcuts with Ctrl+Opt+[key]. For a full description of the keyboard shortcuts available in the Web Viewer, please refer to the online help.	AR-5246
Accessibility	Removed the user-scalable=no and maximum-scale=1.0 attributes that told browsers to disallow resizing of the Web Viewer. This issue resulted in a technical accessibility violation; however, all supported browsers allowed users to zoom in regardless of these settings.	AR-5264
Accessibility	When using a screen reader to navigate the Web Viewer, the list of DataBlocks and reports was not correctly identifying itself as a list of items with a related Sort button.	AR-5366
Accessibility	Argos was ignoring zoom settings configured in the System Settings -> Display area of Windows 10, forcing users to also configure scaling under Advanced Scaling Settings to achieve the desired zoom level.	AR-5692
Charting	When changing the parameters used to generate a chart in the Web Viewer, the chart legend was still displaying previous information even when no data was returned for the second set of parameters.	AR-5446

Area	Description	Issue number
Charting	Charts containing both an area and a line chart were returning "Error Code: J0. Cannot read property 'length' of null" in the Web Viewer when the area chart's dataset referenced a list box, multi-column list box, edit box, memo box, or button.	AR-5268
Dashboards	Dashboard buttons used to control execution of a query dependent on one or more form parameters were not being reset to NULL after a user attempted to run the query without filling out the required parameters.	AR-5407
Form design	When creating or renaming forms in the DataBlock Designer, you can no longer have multiple forms with identical names.	AR-5379
OLAP	If a user specified a saved OLAP setting as the default to be loaded when the dashboard launched and a DataBlock Designer then modified the cube to remove a field that the saved setting depended on, the dashboard would display an error and then close when the user attempted to run it.	AR-5340
Revision Control	In the Revision Manager, resizing columns did not work intuitively, making it difficult to expand the Notes field on the right.	AR-5348
Scheduling	Re-applied the fix for AR-4081 (schedules would sometimes stop running after a schedule or test schedule failed) which may possibly reoccur in version 6.0.	AR-5453
Searching	When searching for an object in Argos, using a single quote character/apostrophe in the search string resulted in an error.	AR-5688
Shortcuts	Extract report shortcuts created from the Web Viewer did not show the extract report icon next to the shortcut.	AR-5100
Web Viewer	When using the Web Viewer on a machine where the local time zone was set to Melbourne/Sydney, date edit fields set to October 1, 2017 were evaluating as September 30, 2017 when referenced in a report.	AR-5262
Web Viewer	In version 6.0 of the Web Viewer, clicking into a form field and then pressing Tab resulted in focus jumping to the top of the Web Viewer instead of going to the next form field.	AR-5588
Web Viewer	In version 6.0 of the Web Viewer, the first item on the dashboard was no longer automatically focused when the dashboard opened.	AR-5589
Web Viewer	Running a report that had a number sign (#) in its name in the Web Viewer was resulting in the error "The system could not find the specified file."	AR-5301
Web Viewer	In the Web Viewer, panels with their alignment set to "Client" that extended past the visible width of the browser window were being cut off or not drawn beyond the initially visible space.	AR-4881
Web Viewer	When a form was renamed to use different capitalization in its name, on-click events that activated the form were not working in the Web Viewer.	AR-5192
Web Viewer	Attempting to run a DataBlock after selecting its Share via Email button was resulting in the error 'DataBlock "" does not exist'.	AR-4934
Web Viewer	After visiting the Change Password screen in the Web Viewer and selecting either Cancel or Update, the title of the Settings dialog was incorrectly showing as "Modal.Title.Settings".	AR-5624

Enhancements

Area	Description	Issue number
Accessibility	The Windows client applications (Argos, FormFusion, IntelCheck, and MAPS Config) can now be launched when using the keyboard to navigate the eLauncher.	MAPS-693
Accessibility	The Help buttons that appear on various dialogs throughout the eLauncher were reading as "english/default" to screen reader users.	MAPS-704
Cloud Connector	The Cloud Connector now supports paginated APIs that pass data through using multiple calls.	MAPS-1884
Data Dictionary	On the Data Dictionary screen, dictionary entries now have an explicit default sort order. You can still change the sort by clicking on the column headers.	MAPS-1898
Documentation	Updated the minimum system requirements to specify that users running Internet Explorer browsers must be on at least version 11.	MAPS-1804
LDAP	When an LDAP server was set to use nested group lookup implemented by the LDAP server, the values in the specified User Groups attribute (e.g. memberOf) were being ignored even if the LDAP server was not configured to use nesting. MAPS now unions the results of the group nesting search with those found using the specified User Groups attribute.	MAPS-1786
Scheduling	Added an option to the Users -> Password Policy screen that controls storing of LDAP users' passwords when they create schedules in Argos. If this option is unchecked, you will need to set a MAPS user as the system-level default user for schedules so that schedules created by LDAP users can continue running.	MAPS-1793
Security	When using HTTPS, all MAPS resources now also load over HTTPS. This change resolves security scan warnings pertaining to passive mixed content vulnerability. Note that in order to avoid reintroducing mixed content, customized resources such as the eLauncher logo will also need to use HTTPS.	MAPS-1775

Resolved Issues

Area	Description	Issue number
Accessibility	Removed the user-scalable=no and maximum-scale=1.0 attributes that told browsers to disallow resizing of the eLauncher. This issue resulted in a technical accessibility violation; however, all supported browsers allowed users to zoom in regardless of these settings.	MAPS-1413
CAS	When configuring authentication through CAS, MAPS was ignoring all <cas:Groups> nodes other than the last one in the list. MAPS now supports any number of groups nodes.	MAPS-1791
Diagnostics	When MAPS was installed on a Windows 10 machine, the boot date/time on the Diagnostics screen was showing as "NET STATISTICS".	MAPS-1918
Groups	When checking permissions for specific objects in Argos, MAPS was unable to determine whether a CAS user had the necessary permissions based on their LDAP group membership.	MAPS-1840
Inspector	In the Inspector, attempting to refresh an individual connected client resulted in missing information for that client.	MAPS-1796
Installation	After installing MAPS from the 6.0.0 setup.exe, the default IP range for the Universal Launcher was not configured automatically as it should have been. MAPS will now create this range automatically if one is not present.	MAPS-1799

Getting Help

For information on using the software, please refer to the in-product Help, which contains detailed information on all aspects of the product.

If you are having problems with the installation or configuration, you can search our knowledge base of common issues and their resolutions at <http://helpdesk.evisions.com>. If you are unable to find the solution, submit a HelpDesk request with a detailed explanation of the problem you are experiencing.

Please do not hesitate to contact the Evisions HelpDesk if any questions or problems arise. We are here to help you and want to ensure your success.

If you find that areas of this documentation could benefit from additional detail or clarification, please let us know. We are constantly trying to improve the installation process to make it as easy as possible.